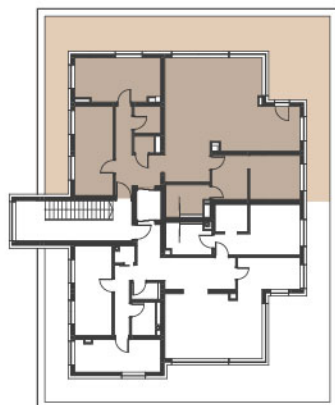
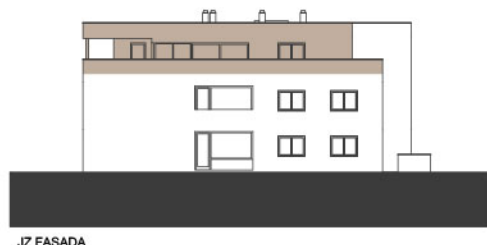


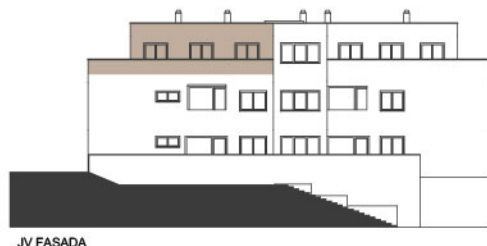
VILE KAJUHOVA



POLOŽAJ STANOVANJA V ETAŽI



JZ FASADA



JV FASADA



POLOŽAJ PARKIRNEGA MESTA IN SHRAMBE V KLETI



SZ FASADA

POLOŽAJ STANOVANJA NA FASADI



TERASNA ETAŽA

STANOVANJE 12

1 - BIVALNI PROSTOR	36,59 m ²	10 - TERASA	81,21 m ²
2 - SOBA Z GARDEROBO	18,43 m ²	11 - SHRAMBA	3,40 m ²
3 - KOPALNICA	5,84 m ²	GARAŽNO PARKIRNO MESTO	1
4 - SOBA	14,70 m ²	ZUNANJE PARKIRNO MESTO	1
5 - SOBA	12,05 m ²		
6 - KOPALNICA	3,44 m ²		
7 - WC	1,92 m ²		
8 - UTILITY	1,39 m ²		
9 - HODNIK	21,74 m ²		
SKUPAJ	116,10 m²		

TLORIS STANOVANJA M 1:100



