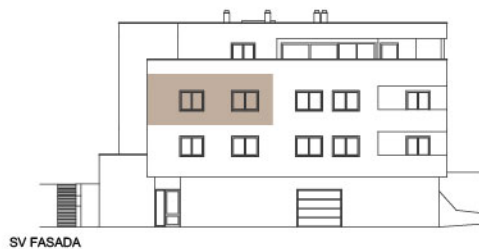


VILE KAJUHOVA



POLOŽAJ STANOVANJA V ETAŽI

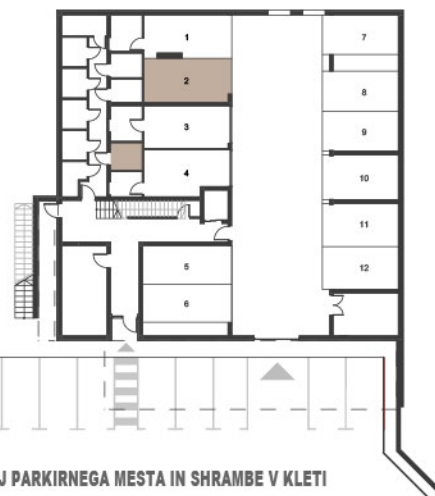


SV FASADA

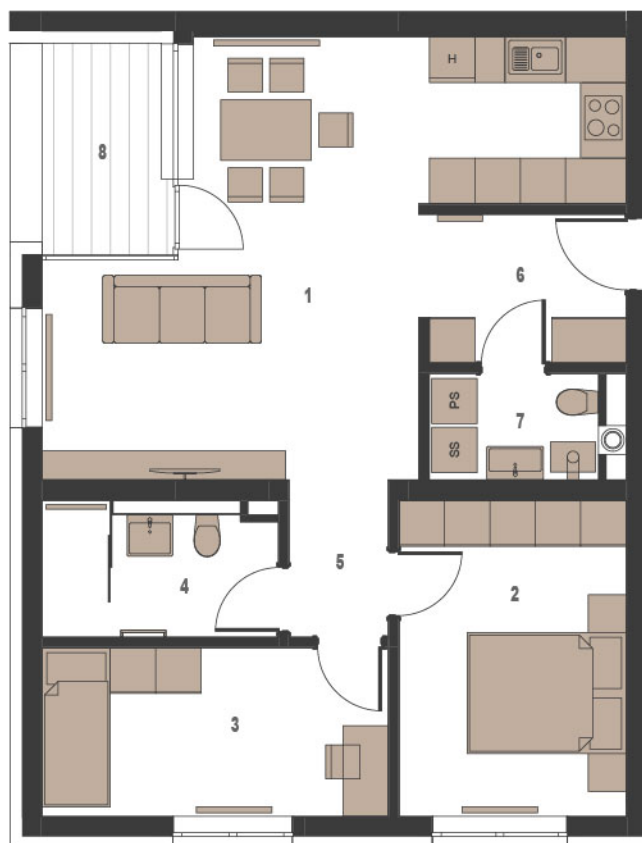


JV FASADA

POLOŽAJ STANOVANJA NA FASADI



POLOŽAJ PARKIRNEGA MESTA IN SHRAMBE V KLETI



1. NADSTROPJE STANOVANJE 10

1 - BIVALNI PROSTOR	29,25 m ²
2 - SOBA	12,51 m ²
3 - SOBA	10,18 m ²
4 - KOPALNICA	5,14 m ²
5 - HODNIK	2,72 m ²
6 - PREDPROSTOR	5,29 m ²
7 - WC / UTILITY	3,54 m ²
SKUPAJ	68,63 m²
8 - LOŽA	4,40 m ²
9 - SHRAMBA	3,82 m ²
GARAŽNO PARKIRNO MESTO	1
ZUNANJE PARKIRNO MESTO	1

