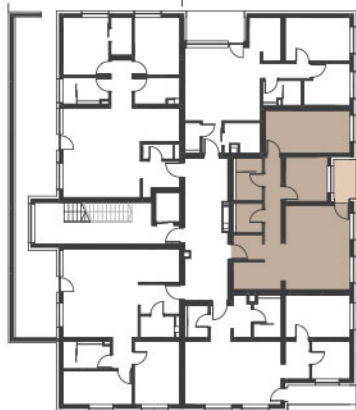
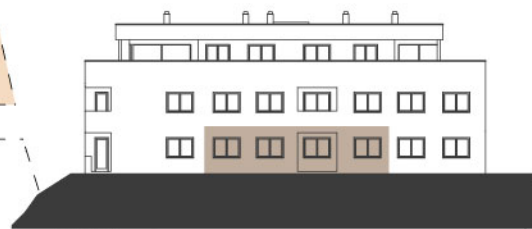


VILE KAJUHOVA

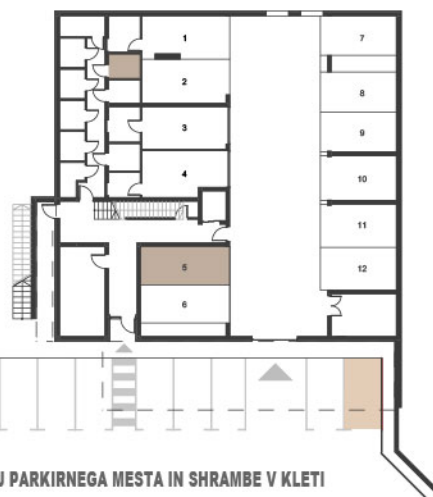


POLOŽAJ STANOVANJA V ETAŽI



ŠZ FASADA

POLOŽAJ STANOVANJA NA FASADI



POLOŽAJ PARKIRNEGA MESTA IN SHRAMBE V KLETI



PRITLIČJE STANOVANJE 3

1 - BIVALNI PROSTOR	24,48 m ²
2 - KUHINJA	5,97 m ²
3 - SOBA	15,64 m ²
4 - KABINET	8,02 m ²
5 - KOPALNICA	5,00 m ²
6 - WC / UTILITY	3,40 m ²
7 - HODNIK	10,77 m ²
SKUPAJ	73,28m²
8 - LOŽA	3,91 m ²
9 - ATRIJ	55,97 m ²
10 - SHRAMBA	3,44 m ²
GARAŽNO PARKIRNO MESTO	1
ZUNANJE PARKIRNO MESTO	1

