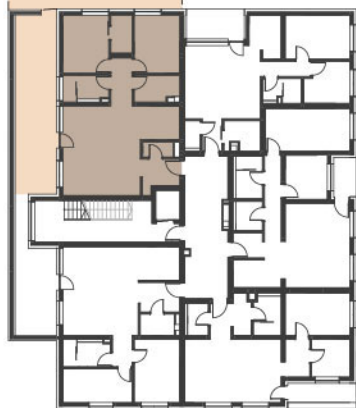
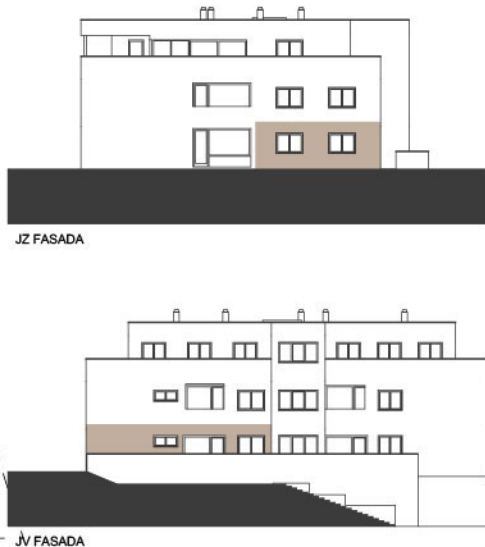


VILE KAJUHOVA



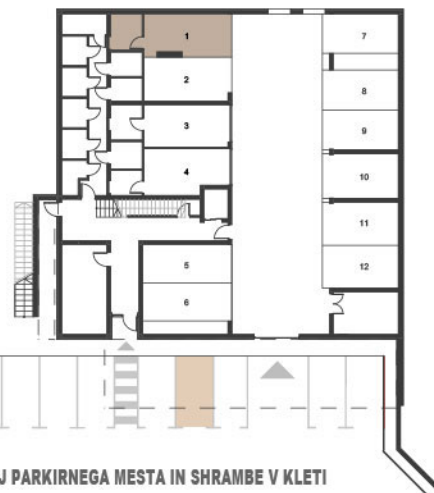
POLOŽAJ STANOVANJA V ETAŽI



JZ FASADA

JV FASADA

POLOŽAJ STANOVANJA NA FASADI



POLOŽAJ PARKIRNEGA MESTA IN SHRAMBE V KLETI



PRITLIČJE STANOVANJE 1

1 - BIVALNI PROSTOR	35,87 m ²
2 - SOBA	11,60 m ²
3 - GARDEROBA	3,58 m ²
4 - SOBA	11,53 m ²
5 - KOPALNICA	4,82 m ²
6 - UTILITY	4,97 m ²
7 - HODNIK	4,41 m ²
8 - PREDPROSTOR	4,87 m ²
9 - WC	1,93 m ²
SKUPAJ	83,58 m²

10 - TERASA	34,32 m ²
11 - ATRIJ	88,27 m ²

12 - SHRAMBA	5,20 m ²
--------------	---------------------

GARAŽNO PARKIRNO MESTO	1
ZUNANJE PARKIRNO MESTO	1

