

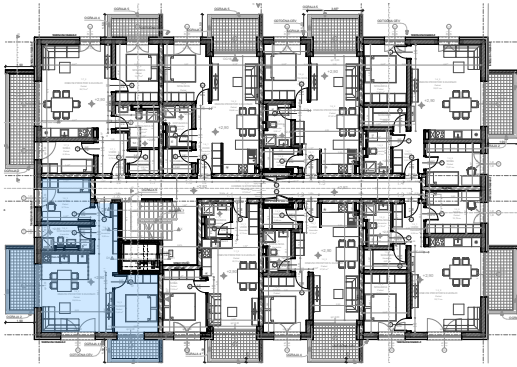
NADSTROPJE, STANOVANJE 1.8

Stanovanje 1.8

| Št. pr. | Prostor | Tlak | Površina m ² |
|---------|--------------------------|----------|----------------------------|
| 1.8_1 | VHOD | Keramika | 5,62 |
| 1.8_2 | DNEVNI PROSTOR S KUHINJO | Parquet | 26,06 |
| 1.8_3 | SOBA | Parquet | 9,79 |
| 1.8_4 | KOPALNICA | Keramika | 5,92 |
| 1.8_5 | SPALNICA | Parquet | 11,60 |
| 1.8_6 | SHRAMBA | Keramika | 3,00 |
| | | | 61,99 m² |

Stanovanje 1.8 LOŽA

| Št. pr. | Prostor | Tlak | Površina m ² |
|---------|---------|-------------|----------------------------|
| 1.8_6 | LOŽA 1 | Granitogres | 7,11 |
| 1.8_7 | LOŽA 2 | Granitogres | 4,22 |
| | | | 11,33 m² |



SHRAMBA V PRITLIČJU

